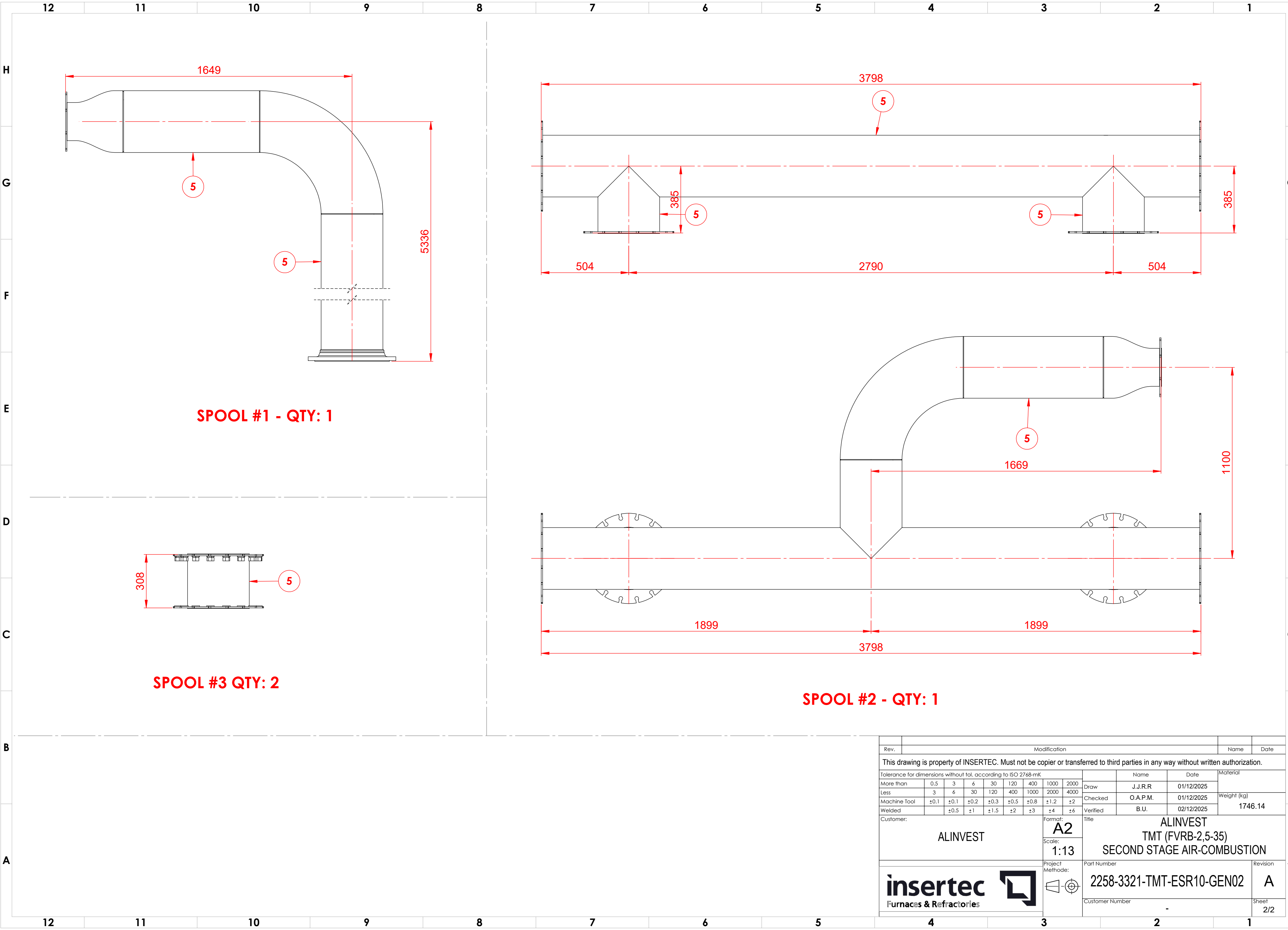


16	DIN933-M24X65-A4-80	A	BOLT M24X65	A4			0.37	32	11.84
15	NUT DIN 934 M24-A4-80	A	NUT M24	A4			0.1	128	12.8
14	DIN933-M24X110-A4-80	A	BOLT M24X110	A4			0.53	96	50.88
13	NUT DIN 934 M20-A4	A	NUT M20	A4			0.06	8	0.48
12	DIN125-M24-A4	A	WASHER M24	A4			0.03	256	7.68
11	DIN127-M24-A4	A	WASHER M24	A4			0.03	128	3.84
10	DIN127-M20-A4	A	WASHER M20	A4			0.02	8	0.16
9	DIN125-M20-A4	A	WASHER M20	A4			0.02	16	0.32
8	DIN933-M20x100-A4-80	A	BOLT M20X100	A4			0.33	8	2.64
7	DIN 2690		GASKET - KLINGERSIL C-4430 - 3 THK. - DN350	FIBERGLASS W/NBR				9	0
6	DIN 2690		GASKET - KLINGERSIL C-4430 - 3 THK. - DN200	FIBERGLASS W/NBR			-	2	0
5	EN 10217-7 - SS316L		TUBE 14" - 5 THK - WELDED PIPE	AISI 316L			0	12162mm	0
4	PID 340	-	CONTROL BUTTERFLY VALVE FOR INSTALLATION BETWEEN 2 FLANGES DN 200 PN 10 FOR AIR AND NATURAL GAS JASTA GD6, DWVG CERT. COMPLETE ASSEMBLED WITH PNEUMATIC ACTUATOR, OPEN/CLOSE IN 3 - 5 SECONDS MAX. AND SIEMENS SIPART PS 2. TYPE: 6DR5010-0NG01-0AA0-Z C20, 4-20 MA IN- AND OUTPUT, 24VDC	COMMERCIAL			28.80	1	28.8
3	PID 380&650		BUTTERFLY VALVE FOR INSTALLATION BETWEEN 2 FLANGES DN350, INCL. STEP SEAT SEALING,FOR AIR / WASTE GAS 450°C WITH PNEUMATIC ACTUATOR, SINGLE-ACTING, OPEN/CLOSE IN 1 SECOND 5 BAR COMPRESSED AIR WITH 3/2-WAY SOLENOID VALVE 24VDC LEAKAGE APPROX. 0.02% OF KV 90°, PN 10, INCL. POSITION SWITCH 24VDC OPEN/CLOSE, 2-WIRE	COMMERCIAL			38.18	2	76.36
2	PID 350&635		BUTTERFLY VALVE FOR INSTALLATION BETWEEN 2 FLANGES DN 350 PN 10 FOR AIR, WITH HANDLE	COMMERCIAL			25.71	2	51.42
1	PID 1100&1101		COMPENSATOR 14" - DN350 - A121 - 600 LENGTH	COMMERCIAL			70.41	1	70.41
Nº	PART NUMBER / ARTICLE CODE	REV.	DESCRIPTION	MATERIAL	MANUFACTURER	TAG	WEIGHT (KG)	QTY.	TOTAL WEIGHT (KG)



Rev.		Modification							Name		Date						
This drawing is property of INSERTEC. Must not be copier or transferred to third parties in any way without written authorization.																	
Tolerance for dimensions without tol. according to ISO 2768-mK											Name		Date		Material		
More than		0.5	3	6	30	120	400	1000	2000	Draw		J.J.R.R		01/12/2025			
Less		3	6	30	120	400	1000	2000	4000	Checked		O.A.P.M.		01/12/2025		Weight (kg)	
Machine Tool		±0.1	±0.1	±0.2	±0.3	±0.5	±0.8	±1.2	±2	Verified		B.U.		02/12/2025		1746.14	
Welded			±0.5	±1	±1.5	±2	±3	±4	±6								
Customer:									Format:		ALINVEST TMT (FVRB-2,5-35) SECOND STAGE AIR-COMBUSTION						
ALINVEST									A2								
Scale:									1:13								
Project Methode:									Part Number		Revision						
insertec Furnaces & Refractories									2258-3321-TMT-ESR10-GEN02		A						
									Customer Number		Sheet						
									-		1/2						



SPOOL #1 - QTY: 1

SPOOL #3 QTY: 2

SPOOL #2 - QTY: 1

Rev.	Modification								Name		Date		
This drawing is property of INSERTEC. Must not be copier or transferred to third parties in any way without written authorization.													
Tolerance for dimensions without tol. according to ISO 2768-mK										Name	Date	Material	
More than	0.5	3	6	30	120	400	1000	2000	Draw	J.J.R.R	01/12/2025		
Less	3	6	30	120	400	1000	2000	4000	Checked	O.A.P.M.	01/12/2025	Weight (kg)	
Machine Tool	±0.1	±0.1	±0.2	±0.3	±0.5	±0.8	±1.2	±2	Verified	B.U.	02/12/2025		
Welded		±0.5	±1	±1.5	±2	±3	±4	±6	1746.14				
Customer: <div>ALINVEST</div>									Format: <div>A2</div>			Title <div>ALINVEST TMT (FVRB-2,5-35) SECOND STAGE AIR-COMBUSTION</div>	
									Scale: <div>1:13</div>				
<div><div>insertec</div><div>Furnaces & Refractories</div></div> <div></div>									Project Methode:		Part Number		Revision
											2258-3321-TMT-ESR10-GEN02		A
											Customer Number		-